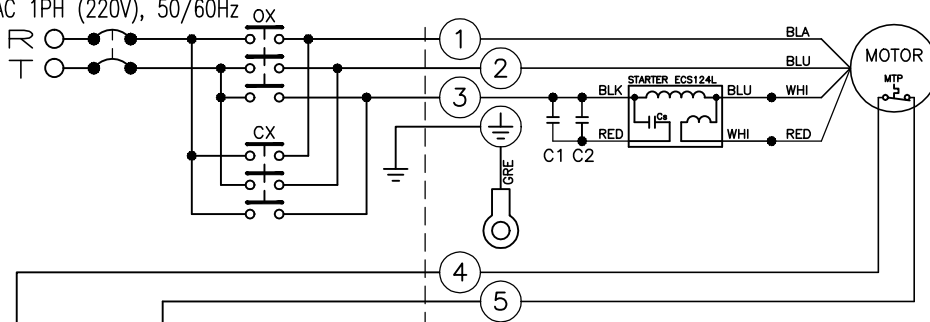
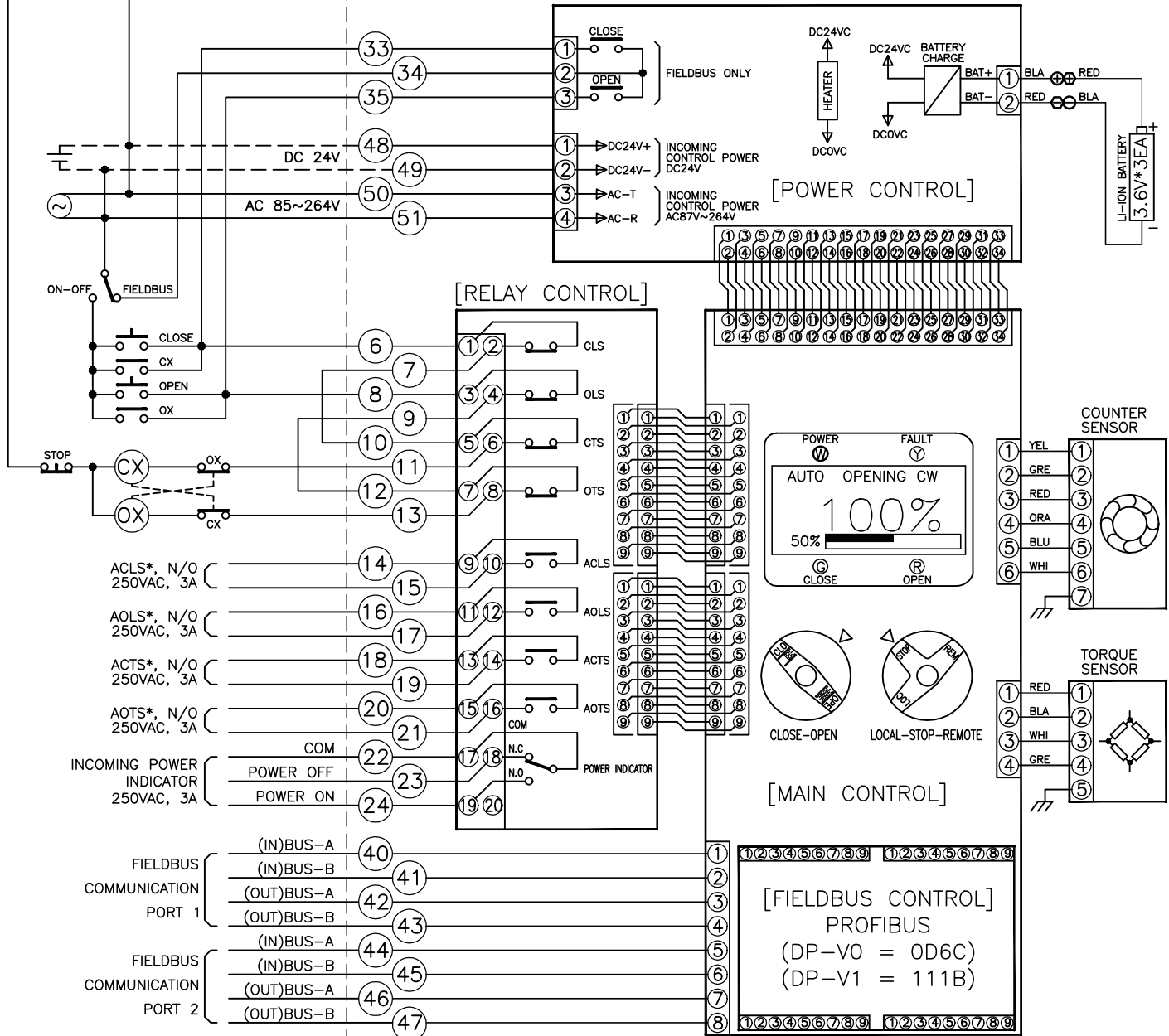
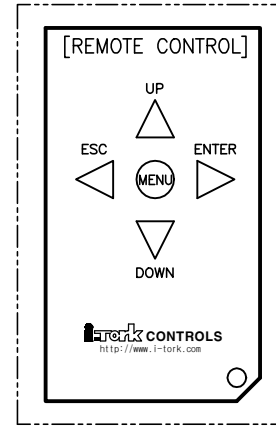



- * IF THE CONTROL INPUT POWER USES DC 24V,
CONNECT + TO TERMINAL 48 & - TO TERMINAL 49.
- ** IF THE CONTROL INPUT POWER USES AC 85-264V,
CONNECT TERMINAL 50 & 51.

INCOMING POWER
AC 1PH (220V), 50/60Hz



OPTION



 http://www.i-tork.com		DRAWN	DESIGN	CHECKED	APPROVER
		C.S.CHO			C.S.CHO
PART NAME		ISSU. DEPT.	DATE	SIZE	PROGRAM
1PH WIRING DIAGRAM		ITCDR	2019.03.14	A4	AUTOCAD LT 2010
OPTION NAME		WIR No.			
BASIC+MPBVx(PROFIBUS)		ITM0180B-76000-E			
ITM-0450					
ITM-0180					
APP'L,FILE					